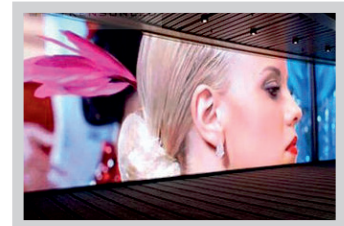
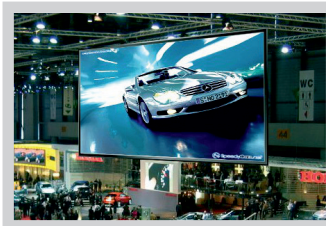


INDOOR

**DIGINNOVA**  
Solutions Galore

## Diginnova Inpad Plus Series

Indoor LED Display Screen - Super Light, Easy to Handle



### Suitable For:



### Key Features:

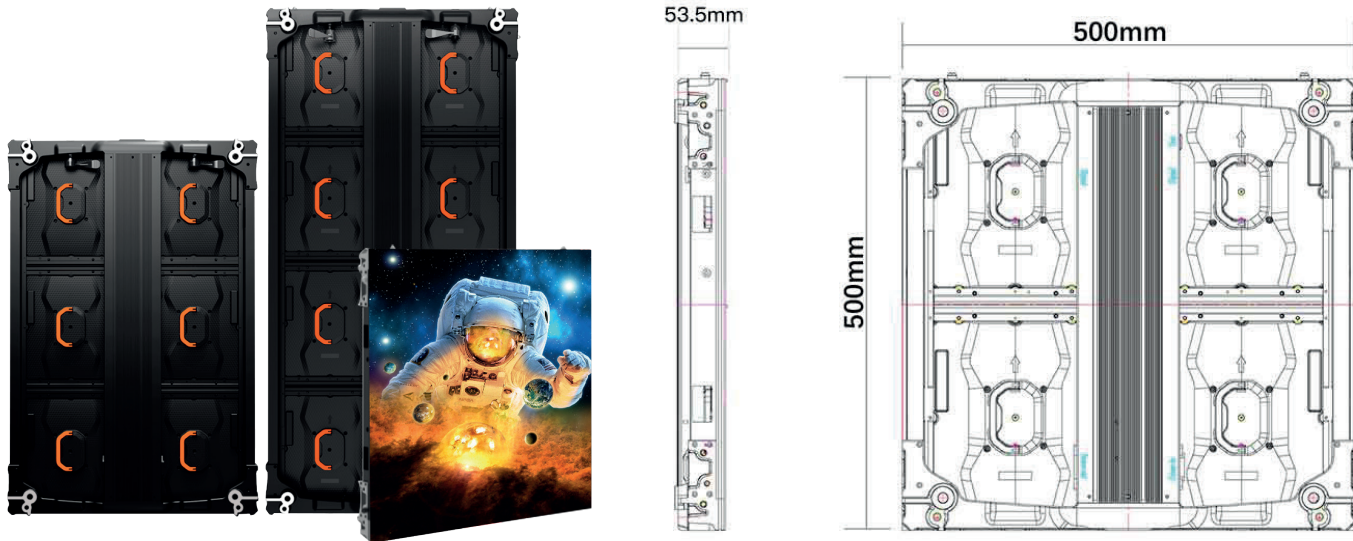
- Super flat & thin panel with CNC technology
- Aluminium lightweight cabinet - 54 mm
- Cube screen achievable
- Total front-rear service, Noise-free
- High refresh-rate 3840 Hz
- High brightness upto 3000 Nits

### Product Highlights:



### Advantages:

- Direct installation on wall, wooden panel, & ceiling hanging option
- No structure required, Light weight cabinets
- Low power consumption 70W / Panel approx
- Combination of cabinet sizes
- Pixel pitch: 1.9mm to 4.8mm



## Technical Data:

Model No.	DI-IPP1.9	DI-IPP2.6	DI-IPP2.9	DI-IPP3.1	DI-IPP3.9	DI-IPP4.8
Pixel Pitch	1.9mm	2.6mm	2.9mm	3.1mm	3.9mm	4.8mm
Pixel Density Pixels M2	262,144	147,456	112,896	102,400	65,536	43,264
LED Arrangement	SMD 1515	SMD 2121	SMD 2121	SMD 2121	SMD 2121	SMD 2121
Module Resolution (Pixels)	128x128	96x96	84x84	80x80	64x64	52x52
Module Dimensions (mm)	250x250mm					
Panel Resolution (Pixels)	256X256	192X192	168x168	160x160	128x128	104x104
Brightness level (Nits)	800-1000	1000	1000/16001000/3000			1000
Refresh Rate	1920-3840 hz					
Driving Mode	32	45	32	45	32	32
Grey Scale	≥14Bit	≥14Bit	≥14Bit	≥14Bit	≥14Bit	≥14Bit
Contrast Ratio	8000:1	8000:1	8000:1	8000:1	10000:1	10000:1
Frame Rate (Hz/sec)	60 Hz					
Max Power Consumption	180 watts					
Ave Power Consumption	80 watts					
Visual View Angle	160° /140°					
Operating Power Source	100-240V AC 50-60 Hz					
Storage Temperature	-35°C ~ 60°C					
Operating Temperature	-10°C ~ 45°C					
Relative Humidity	≤95%					
Storage Humidity	≤45%					
Protecting Rating	IP 20					
Signal Input Source	S-Video, VGA, DVI, HDMI SDI					
MTBF (in hours)	10,000					
LED Lifetime (In Hours)	100,000					
Panel Dimensions (mm)	500*500*53.6mm, 500*750*53.6mm, 500*1000*53.6mm					
Panel Weight (kg)	5.5/4.5/3.5kg					
Panel Material	Die Cast Almunium - CNC technology					
Service Access	Front					
Installation options	Wall, Floor & Ceiling hanging					
Certification	CE, ETL, FCC EMC					

Images used are all for illustrative purpose only. The technical specification & product appearance may change based on actual product offered by the company. Terms & conditions apply.