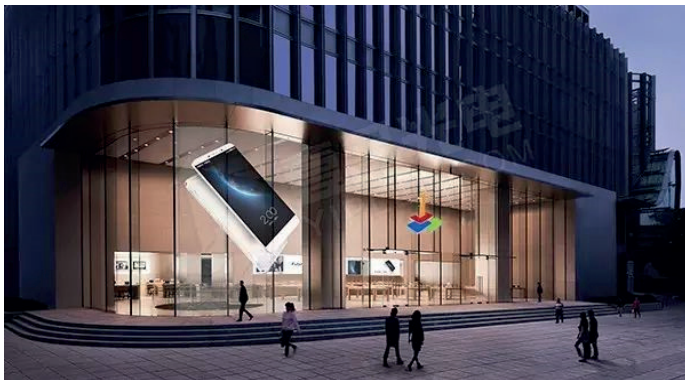


Diginnova Crystal F Transparent Series

The Next Generation Glass Window Display



Suitable For:



Product Highlights:



Key Features:

- Ultra slim design
- 24/7 easy operation, Aluminum Cabinet
- Front and rear maintenance
- High refresh rate 3840 Hz
- Ceiling hanging, show window option

Advantages:

- Slim PCB design allow high transparency upto 80%
- Flexible cabinet sizes
- Easy and quick installation
- Rear/front acrylic cover for protection
- Up to 85% transparency



Technical Data:

Model	Description	DI-ITR2.5F	DI-ITR3.9F	DI-ITR5.2F	DI-ITR7.9F	DI-ITR10.4F
Module	Pixel Size	P2.52X7.81	P3.96X7.81	P5.2X10.4	P7.9X7.81	P10.4
	Resolution	128x48	96x48	96x40	60x40	48x32
	Density (dot/m2)	50,688	32,256	18,432	16,128	9,216
	Horizontal Pixel Pitch	2.52mm	3.96mm	5.2mm	7.9mm	10.44mm
	Vertical Pixel Pitch	7.81mm	7.81mm	10.4mm	7.81mm	10.4mm
	Viewing Angle	140° /140°				
Cabinet	SMD Type	SMD2020				
	Cabinet Size (mm)	1000X500 & 1000X1000				
	Cabinet Material	Aluminium				
	Maintenance	Front & Rear				
	Avg Power Consumption	160 watts				
	Max Power Consumption	400 watts				
Screen	Cabinet Resolutions (dots)	256x96	192x92	192x96	128x80	96x64
	Weight (Kg/Panel)	6.5/13	6.4/12.8	6.4/12.8	6.25/12.5	6.25/12.5
	Brightness	1000-1500 Nits				
	Refresh Frequency	1920-3840 Hz				
	Packing way	Plywood box Flight case (optional)				
	Transparency Rate	62%	62%	70%	62%	70%
	Input (v)	100-240V AC 50-60 Hz				
	Driving Mode	Constant Drive				
	Ingress Protection	IP 20				
	Grey Level	16 bit				
Installation	Operating Humidity	10% - 90%				
	Operating Temperature	-20°C ~ 60°C				
Certification	Installation Types	Behind Glass floor standing or ceiling hanging				